

## TECHNICAL SCIENTIFIC REPORT

# DEVIL'S CLAW DRY EXTRACT

*(Harpagophytum procumbens DC and/or Harpagophytum Zeyheri Decne)*

### BOTANICAL DESCRIPTION:

Dried cut root of *Harpagophytum procumbens* DC and/or *Harpagophytum Zeyheri* Decne.

Accurate selection and identification of Devil's claw root and rhizome according to current monograph of European Pharmacopoeia "1095: Devil's claw root".



### EXTRACT INFORMATION:

DEVIL'S CLAW DRY EXTRACT is obtained from roots of *Harpagophytum procumbens* DC and/or *Harpagophytum zeyheri* Decne by aqueous or hydroalcoholic extraction.

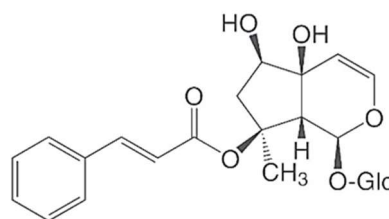
DEVIL'S CLAW EXTRACT is available from Organic crops.

**INCI Name:** HARPAGOPHYTUM PROCUMBENS ROOT EXTRACT

**CAS:** 84988-65-8

**EINECS:** 284-853-6

**ANALYTICAL MARKERS:** Iridoid glycosides as Harpagoside



Harpagoside

Select Botanicals Extracts comply with the requirements of any relevant monograph in the European Pharmacopoeia and/or European Directives applicable to the end use of the extract.

*Select Botanical, S.L. manufactures Highest Quality Extracts following strictest Quality Management System in compliance with the "Good Manufacturing Practices" (GMP) requirements, carrying on the last manufacturing steps in classified areas (Clean Rooms).*

### PHYTOTHERAPY INDICATIONS:

- Traditional herbal medicinal product for relief of minor articular pain. <sup>(8)</sup>
- Traditional herbal medicinal product used for the relief of mild digestive disorders such as bloating and flatulence and where there is loss of appetite. <sup>(8)</sup>
- Indicated in the symptomatic treatment of painful osteoarthritis and relief of low back pain. <sup>(1)</sup>
- Indicated in the symptomatic treatment of loss of appetite and dyspepsia. <sup>(1)</sup>
- Indicated in the treatment of rheumatic disease, arthrosis, sores, ulcer, boils, and skin lesions. <sup>(5,6)</sup>

- Anti-inflammatory <sup>(1,3,5,6,7)</sup>
- Analgesic <sup>(3,6,7)</sup>
- Antioxidant <sup>(7,8)</sup>

## ACTIVITIES AND PHARMACOLOGICAL STUDIES:

- **Anti-inflammatory activity:** After administration of Devil's claw extracts anti-inflammatory activity has been described. In various animal models of inflammation (carrageenan-induced rat paw oedema, adjuvant-induced arthritis) *Harpagophytum procumbens* shows anti-inflammatory properties when administered by intraperitoneal route only. Clinical studies done in the field of osteoarthritis and low back pain. <sup>(1,7)</sup>
- **Analgesic activity:** Devil's Claw Extract exhibited dose-dependent peripheral analgesic effects after intraperitoneal administration into mice. Clinical studies done in the field of osteoarthritis and low back pain. <sup>(1,7)</sup>
- **Cardiovascular activity:** Methanolic extract of *Harpagophytum procumbens* exerts hypotensive and bradycardic effects in conscious rats. <sup>(1,7)</sup>

## DOSAGE AND ADMINISTRATION:

### Dosage and administration:

#### Oral Use:

Devil's Claw Dry Extract may be found formulated in solid and liquid preparations.

Recommended dosage and administration for traditional use are indicated in the European Union herbal monograph on *Harpagophytum procumbens* DC and/or *Harpagophytum zeyheri* DECNE, radix EMA/HMPC/627057/2015. <sup>(8)</sup>

#### Topical use:

Devil's Claw Dry Extract may be formulated in ointments, creams, and gels, among others as skin conditioning. <sup>(4,7)</sup>

### Undesirable effects:

There are no reported toxic effects or intolerance phenomenon to normal use doses.

Mild gastro-intestinal disturbances may occur in sensitive individuals especially at higher dosage levels <sup>(1)</sup>

### Precautions/Contraindications:

As a general precaution, patients with gastric or duodenal ulcer should not use Devil's claw root preparations.

Caution should be taken when Devil's claw is administered to patients affected by cardiovascular disorders.

Devil's Claw Dry Extract should not be used during pregnancy and lactation. <sup>(8)</sup>

## BIBLIOGRAPHY AND OTHER REFERENCE SOURCES:

1. ESCOP Monographs. Second edition. 2003.
2. Leung, A. Y., Foster, S. Encyclopedia of Common Natural Ingredients Used in Food, Drugs and Cosmetics. John Wiley & Sons, Inc. 2nd Edition. USA. 1996
3. Blumenthal. The Complete German Commission E Monographs. Therapeutic Guide to Herbal Medicines. American Botanical Council. Austin, Texas 1998.
4. Newall, A. C., Anderson, L. A., Phillipson, D. J. Herbal Medicines. The Pharmaceutical Press. 1996.
5. Pons, L., Parra, J. L. Ciencia cosmética. Bases fisiológicas y criterios prácticos. C.G.C.O.F. 1995.
6. Blumenthal/Goldberg/Brinckmann. Herbal Medicine. Expanded Commission E Monographs. 2000.
7. Assessment report on *Harpagophytum procumbens* DC and/or *Harpagophytum zeyheri* Decne, radix. EMEA/HMPC/251324/2006.
8. European Union herbal monograph on *Harpagophytum procumbens* DC. and/or *Harpagophytum zeyheri* Decne., radix EMA/HMPC/627057/2015.

Information contained in this Technical Scientific Report is believed to be accurate and is offered in good faith for the benefit of the user of the product. Select Botanical, S.L. cannot assume any liability or risk involved in the use of its products since the conditions of the use are beyond our control. The user of our product is responsible for compliance with all legal regulations applying to the use of our products, including patent laws.

Version 02/April2021